

750 ml white pot

**General Information**

Ordering numbers : S70590069A35N2017040

Capacity : 750 ml

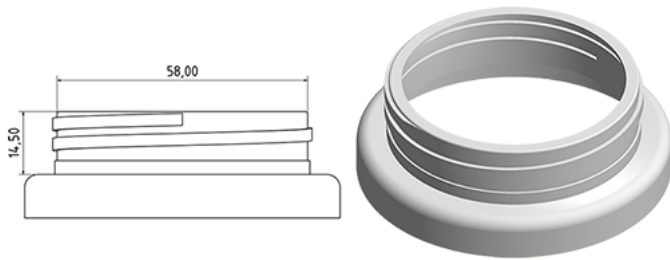
Weight : 40.000 gr

Color : C069 (White)

Material : M90 (MAT. HDPE SABIC B.5421)

**Media**

**Neck : G017 (Screwing cap C55)**



**Specification : N2**

Without level line, with tactile sigle

**Standard packaging : A35**

1080 pieces per carton / 1080 pieces per pallet

- Pieces arranged on the cap carton
- 1 Cap carton
- 9 Layers
- 1 Intermediate pallet 100 X 120
- 1 Cap carton
- 9 Layers
- 1 pallet 100 X 120

X : 120 cm - Y 97 cm

